

## Product datasheet for TA503320

### MCAK (KIF2C) Mouse Monoclonal Antibody [Clone ID: OT11C5]

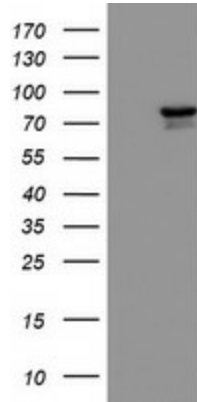
#### Product data:

Product Type:	Primary Antibodies
Clone Name:	OT11C5
Applications:	FC, IF, IHC, WB
Recommend Dilution:	WB 1:500~2000, IHC 1:150, IF 1:100, FLOW 1:100
Reactivity:	Human, Monkey, Mouse, Rat
Host:	Mouse
Isotype:	IgG1
Clonality:	Monoclonal
Immunogen:	Full length human recombinant protein of human KIF2C(NP_006836) produced in HEK293T cell.
Formulation:	PBS (PH 7.3) containing 1% BSA, 50% glycerol and 0.02% sodium azide.
Concentration:	0.65 mg/ml
Purification:	Purified from mouse ascites fluids or tissue culture supernatant by affinity chromatography (protein A/G)
Predicted Protein Size:	81.1 kDa
Gene Name:	kinesin family member 2C
Database Link:	<a href="#">NP_006836 Entrez Gene</a> <a href="#">73804 MouseEntrez Gene</a> <a href="#">171529 RatEntrez Gene</a> <a href="#">705381 MonkeyEntrez Gene</a> <a href="#">11004 Human</a>
Background:	The protein encoded by this gene is a member of kinesin-like protein family. Proteins of this family are microtubule-dependent molecular motors that transport organelles within cells and move chromosomes during cell division. This protein is important for anaphase chromosome segregation and may be required to coordinate the onset of sister centromere separation. [provided by RefSeq]
Synonyms:	CT139; KNSL6; MCAK
Protein Families:	Druggable Genome

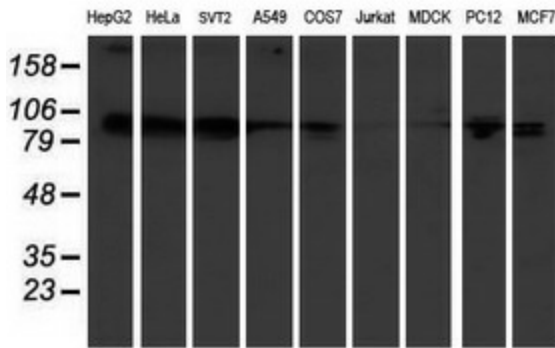


[View online »](#)

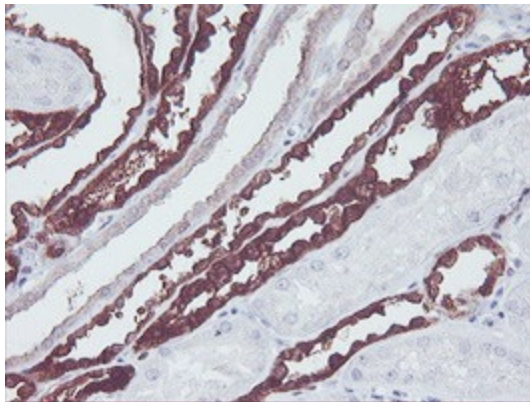
Product images:



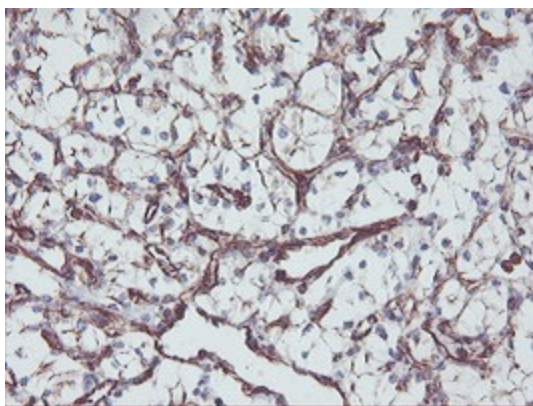
HEK293T cells were transfected with the pCMV6-ENTRY control (Left lane) or pCMV6-ENTRY KIF2C ([RC200254], Right lane) cDNA for 48 hrs and lysed. Equivalent amounts of cell lysates (5 ug per lane) were separated by SDS-PAGE and immunoblotted with anti-KIF2C. Positive lysates [LY402046] (100ug) and [LC402046] (20ug) can be purchased separately from OriGene.



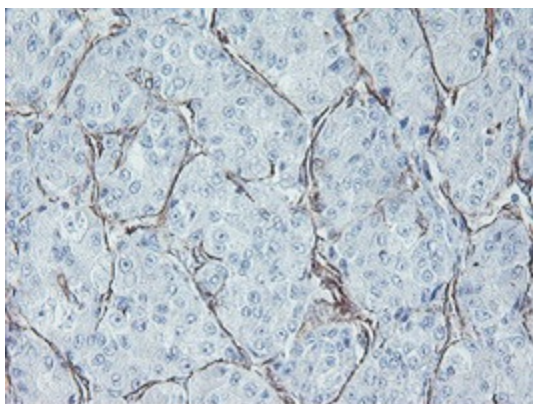
Western blot analysis of extracts (35ug) from 9 different cell lines by using anti-KIF2C monoclonal antibody.



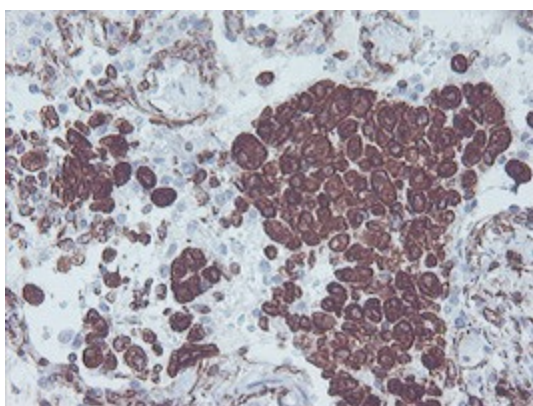
Immunohistochemical staining of paraffin-embedded Human Kidney tissue within the normal limits using anti-KIF2C mouse monoclonal antibody. (Heat-induced epitope retrieval by 10mM citric buffer, pH6.0, 100°C for 10min, TA503320)



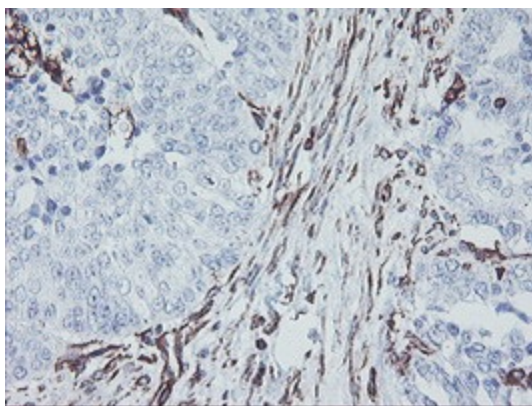
Immunohistochemical staining of paraffin-embedded Carcinoma of Human kidney tissue using anti-KIF2C mouse monoclonal antibody. (Heat-induced epitope retrieval by 10mM citric buffer, pH6.0, 100°C for 10min, TA503320)



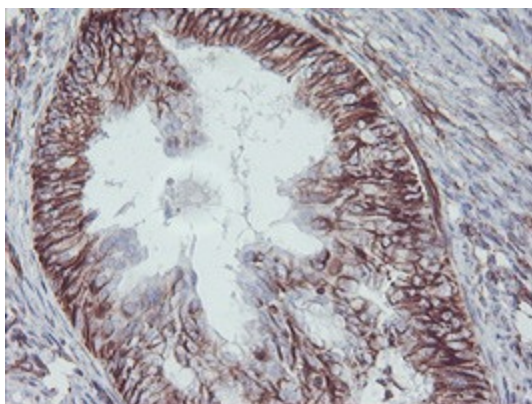
Immunohistochemical staining of paraffin-embedded Carcinoma of Human liver tissue using anti-KIF2C mouse monoclonal antibody. (Heat-induced epitope retrieval by 10mM citric buffer, pH6.0, 100°C for 10min, TA503320)



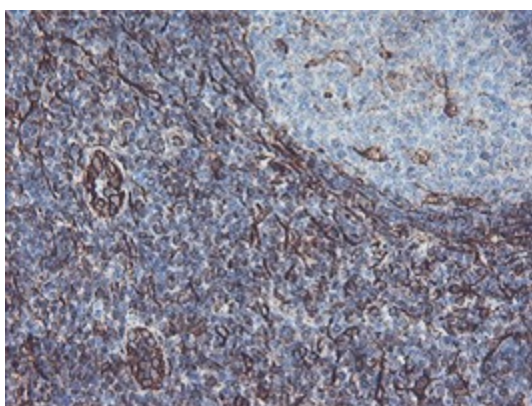
Immunohistochemical staining of paraffin-embedded Carcinoma of Human lung tissue using anti-KIF2C mouse monoclonal antibody. (Heat-induced epitope retrieval by 10mM citric buffer, pH6.0, 100°C for 10min, TA503320)



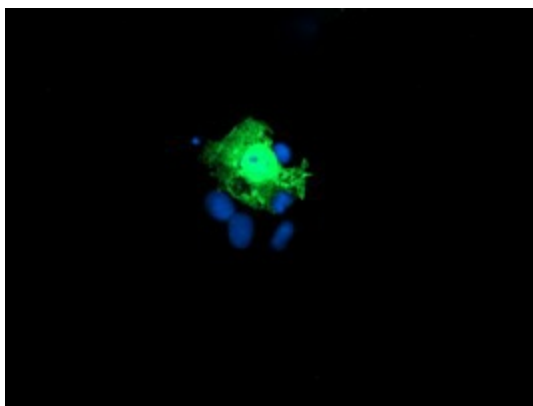
Immunohistochemical staining of paraffin-embedded Adenocarcinoma of Human ovary tissue using anti-KIF2C mouse monoclonal antibody. (Heat-induced epitope retrieval by 10mM citric buffer, pH6.0, 100°C for 10min, TA503320)



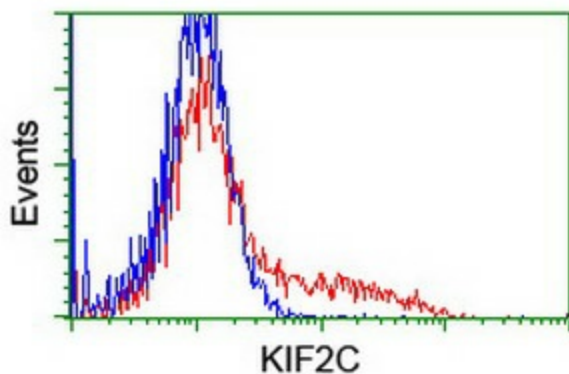
Immunohistochemical staining of paraffin-embedded Adenocarcinoma of Human endometrium tissue using anti-KIF2C mouse monoclonal antibody. (Heat-induced epitope retrieval by 10mM citric buffer, pH6.0, 100°C for 10min, TA503320)



Immunohistochemical staining of paraffin-embedded Human tonsil within the normal limits using anti-KIF2C mouse monoclonal antibody. (Heat-induced epitope retrieval by 10mM citric buffer, pH6.0, 100°C for 10min, TA503320)



Anti-KIF2C mouse monoclonal antibody (TA503320) immunofluorescent staining of COS7 cells transiently transfected by pCMV6-ENTRY KIF2C ([RC200254]).



HEK293T cells transfected with either [RC200254] overexpress plasmid (Red) or empty vector control plasmid (Blue) were immunostained by anti-KIF2C antibody (TA503320), and then analyzed by flow cytometry.